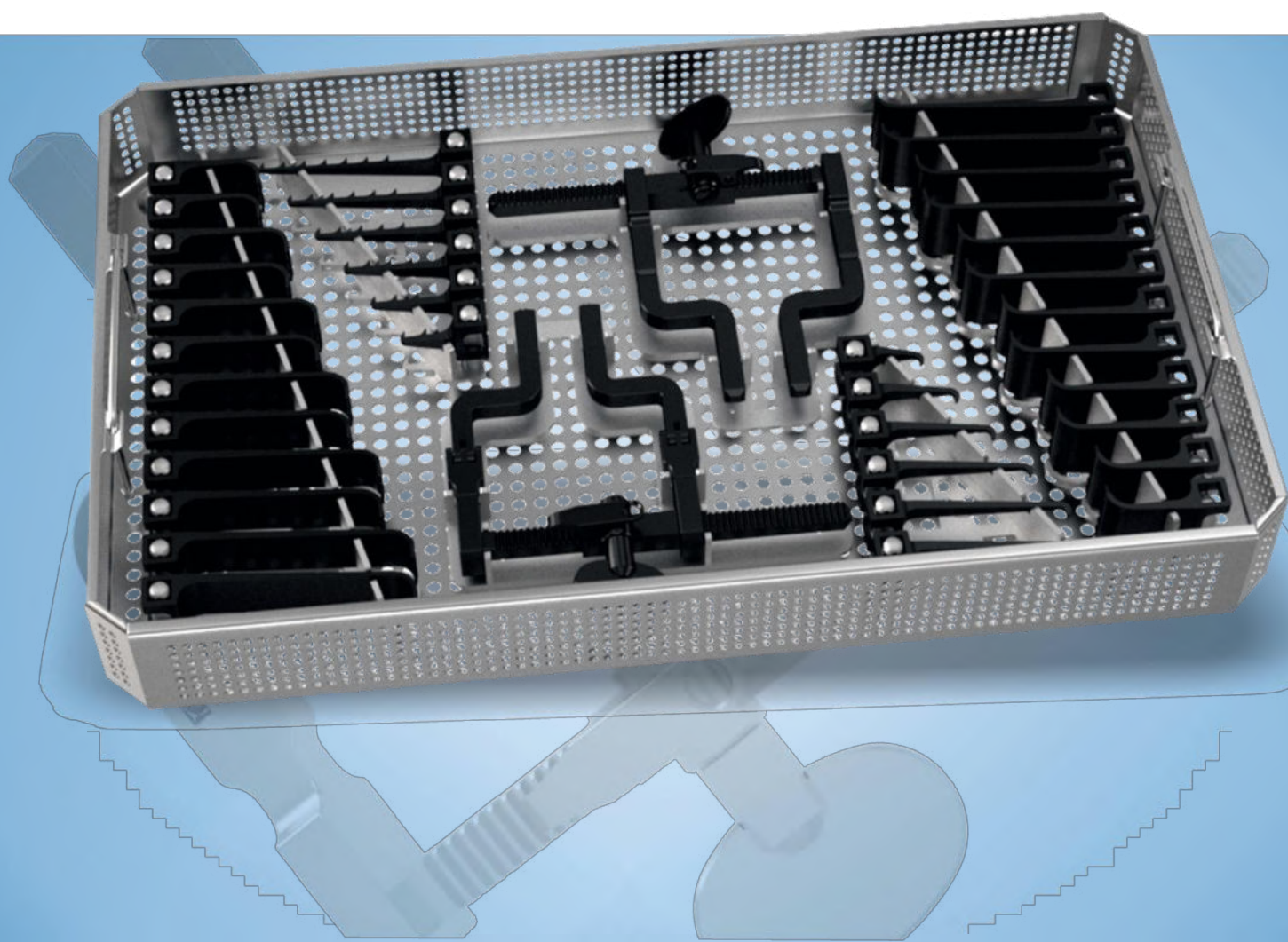




MCC Retractor

Micro Discectomy Retractor

- Optimal Exposure
- Retractors and blades TiAIN coated with black finish
- Made in Germany




Retraktoren: TiAIN beschichtet
Retractors: TiAIN coated


MB1-10-777-05	Set 1-10-777-20	Set 1-10-777-25
MCC Retraktor mit Gelenk max. Spannweite 85 mm MCC Hinged Retractor max. opening: 85 mm/ 3.3"	*	**


MB1-10-777-10

MCC Retraktor starr
max. Spannweite 85 mm
MCC Rigid Retractor
max. opening: 85 mm/ 3.3"


Alle Valven und Haken: TiAIN beschichtet
All blades and hooks: TiAIN coated

Valve 2-zahnig, 17 mm breit
Blade 2 teeth, 17 mm

	B - width	T - depth
MB1-10-778-82	17 mm	30 mm
MB1-10-778-84	17 mm	40 mm
MB1-10-778-86	17 mm	50 mm
MB1-10-778-88	17mm	60 mm
MB1-10-778-90	17 mm	70 mm
MB1-10-778-92	17 mm	80 mm
MB1-10-778-93	17 mm	90 mm

Valve 2-zahnig, 20 mm breit
Blade 2 teeth, 20 mm

	B - width	T - depth
MB1-10-778-42	20 mm	50 mm
MB1-10-778-43	20 mm	60 mm
MB1-10-778-44	20 mm	70 mm



Valve verjüngt, 6-zahnig, 27 mm breit
Tapered blade, 6 teeth, 27 mm

	B - width	T - depth
MB1-10-778-95	27 mm	40 mm



Valve 4-zahnig, 20 mm breit
Blade, 4 teeth, 20 mm

	B - width	T - depth	Set 1-10-777-20	Set 1-10-777-25
MB1-10-778-05	20 mm	30 mm		**
MB1-10-778-10	20 mm	40 mm	*	**
MB1-10-778-15	20 mm	50 mm	*	**
MB1-10-778-20	20 mm	60 mm	*	**
MB1-10-778-25	20 mm	70 mm	*	**
MB1-10-778-30	20 mm	80 mm		**
MB1-10-778-35	20 mm	90 mm		



Valve 6-zahnig, 27 mm breit
Blade, 6 teeth, 27 mm

	B - width	T - depth	Set 1-10-777-20	Set 1-10-777-25
MB1-10-778-55	27 mm	30 mm		**
MB1-10-778-60	27 mm	40 mm	*	**
MB1-10-778-65	27 mm	50 mm	*	**
MB1-10-778-70	27 mm	60 mm	*	**
MB1-10-778-75	27 mm	70 mm	*	**
MB1-10-778-80	27 mm	80 mm		**
MB1-10-778-81	27 mm	90 mm		



Mehrzahn-Haken, 2 mm
Multiple toothed hook, 2.0 mm

	Länge / length	Zähne / tooth	Set 1-10-777-20	Set 1-10-777-25
MB1-10-779-55	20 mm	2		**
MB1-10-779-60	30 mm	3	*	**
MB1-10-779-65	40 mm	4	*	**
MB1-10-779-70	50 mm	5	*	**
MB1-10-779-75	60 mm	6	*	**
MB1-10-779-80	70 mm	7		**
MB1-10-779-81	80 mm	8		



Haken, 1-zahnig, 1,8 mm
Hook blade, 1 teeth, 1.8 mm

	Länge / length	Set 1-10-777-20	Set 1-10-777-25
MB1-10-779-05	20 mm		**
MB1-10-779-10	30 mm	*	**
MB1-10-779-15	40 mm	*	**
MB1-10-779-20	50 mm	*	**
MB1-10-779-25	60 mm	*	**
MB1-10-779-30	70 mm		**
MB1-10-779-35	80 mm		



MB1-20-968-74 *

MCC Siebkorb klein mit Deckel 243 mm x 253 mm x 50 mm
 MCC Tray small with lid 243 mm x 253 mm x 50 mm

MB1-20-968-75 **

MCC Siebkorb groß mit Deckel 405 mm x 253 mm x 50 mm
 MCC Tray large with lid 405 mm x 253 mm x 50 mm

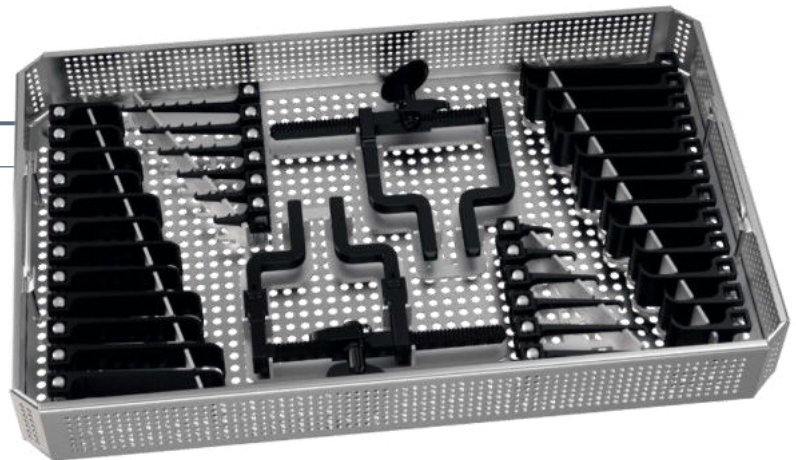
MB1-10-777-20

MCC Set klein mit Siebkorb MB1-20-968-74 und beweglichem Sperrer
 (*) Valven paarweise, Haken einzeln
 Basic MCC Set with tray and hinged retractor (*)
 Blades 2 each, hook 1 each



MB1-10-777-25

MCC Set groß mit Siebkorb MB1-20-968-75 und 2 beweglichen Sperrern
 (**) Valven paarweise, Haken einzeln
 MCC Set large with tray
 and 2 hinged retractors (**)
 Blades 2 each, hook 1 each



Änderungen der technischen Angaben und Maße liegen in unserem Ermessen. Modelländerungen vorbehalten.
 Ohne unsere ausdrückliche schriftliche Genehmigung darf dieses Printmedium weder im Gesamten noch auszugsweise kopiert oder nachgedruckt werden.
 Changes in technical specifications and dimensions are at our discretion. Subject to modification.
 Without our explicit written approval this print media may not be copied or reprinted as a whole or in extracts.